

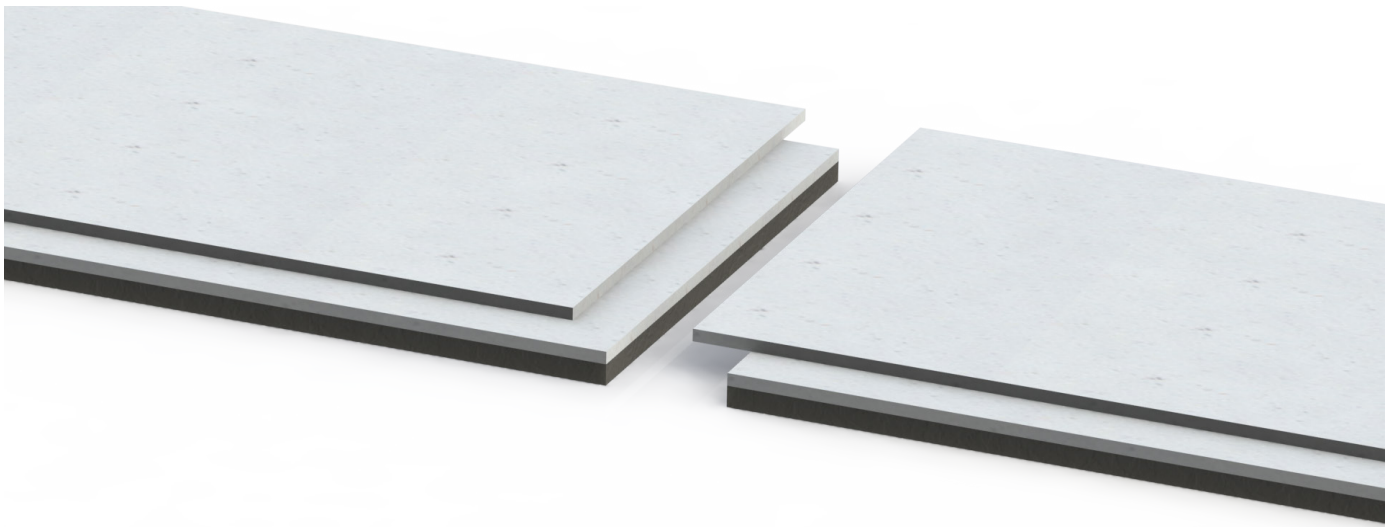


It's not magic, it's engineering.™

Impact and Airborne Sound Control

GENIEBOARD

UNIVERSAL FLOORING BOARDS



GENIEBOARD

Universal Flooring Boards

GenieBoard 300 Series

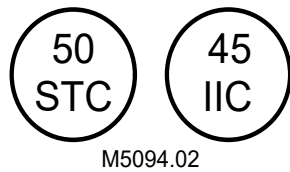
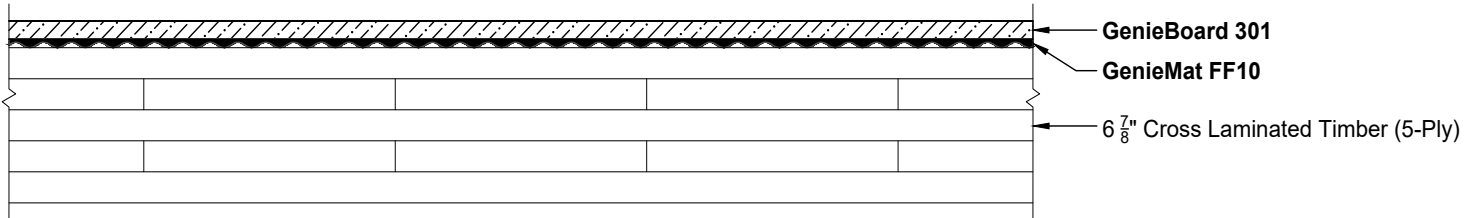
GenieBoard 300 series dry cementitious layers are used in conjunction with GenieMat® FF resilient floating floors to meet STC and IIC requirements in floor-ceiling assemblies.

- **Eliminating the wet trade simplifies construction and saves cost.**
- **Reduce risk of mold and slurry staining.**
- **No cure time means faster construction.**

PRODUCT SPECIFICATIONS		
PRODUCT SPECIFICATION	GENIEBOARD 301	GENIEBOARD 302
Thickness	3/4"	1"
Length (mm)	59.055"	59.055"
Width (mm)	19.685"	19.685"
Coverage (sqft)	8.07	8.07
Weight (lbs/sqft)	4.71	5.94
Dead load (KN/m2)	0.23	0.29
Thermal resistance (Km2/W)	0.06	0.08
Fire class EN 13501	A2fl-s1	A2fl-s1

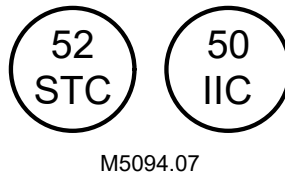
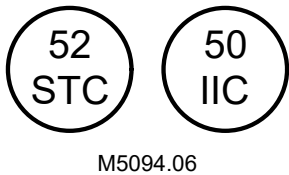
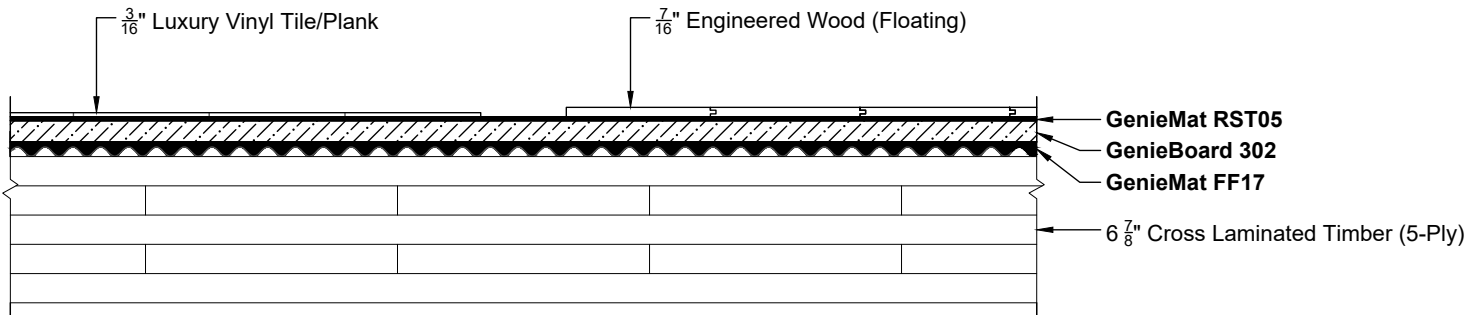
Cross Laminated Timber (5-Ply) with GenieBoard 301

Application: Office and School buildings



Cross Laminated Timber (5-Ply) with GenieBoard 302

Application: Multi-family residential



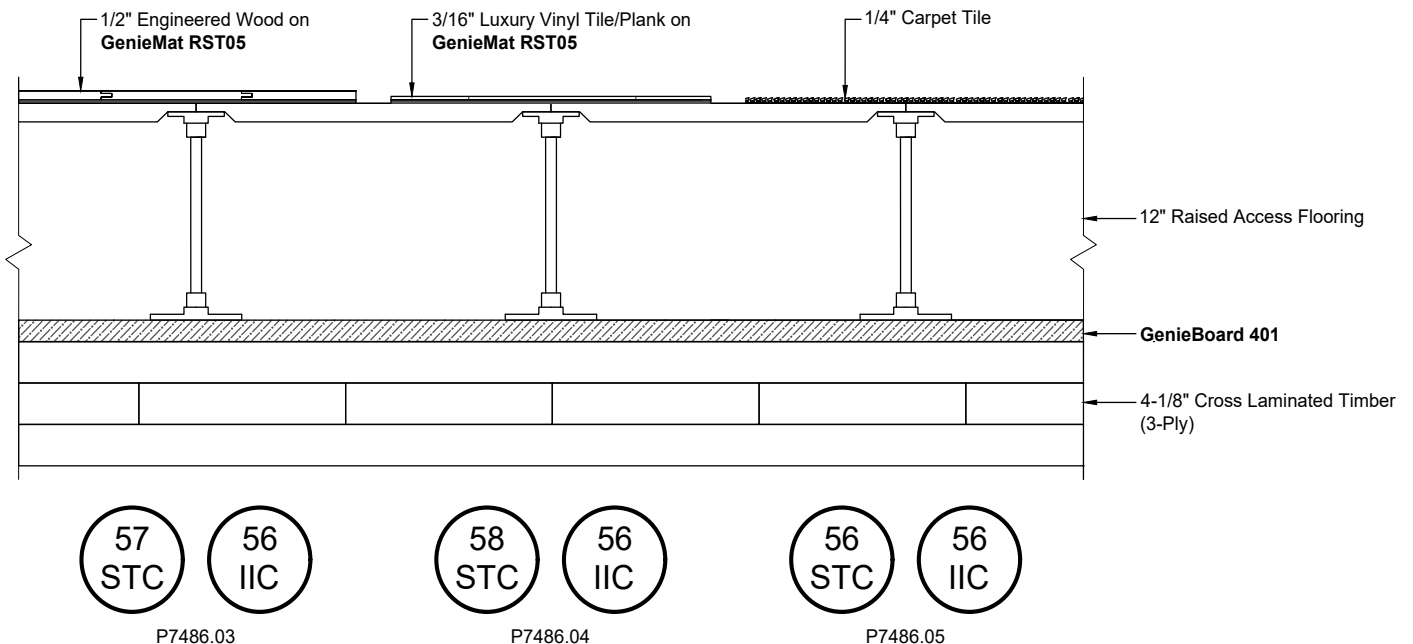
GenieBoard 400 Series

GenieBoard 400 series boards combine a non-combustible surface with resilient substrate to meet STC and IIC requirements in floor-ceiling assemblies.

- Provides effective impact and airborne sound insulation for under raised access floor systems.
- Non-combustible surface allows for air handling in the plenum
- Eliminates the need for wet trade

PRODUCT SPECIFICATIONS	
PRODUCT SPECIFICATION	GENIEBOARD 401
Thickness	1-1/8" (29mm)
Length (mm)	96" (2400mm)
Width (mm)	48" (1200mm)
Coverage (sqft)	32
Weight (lbs/sqft)	4.58

Cross Laminated Timber (3-Ply) with GenieBoard 401



GenieBoard Protect Series

Universal Flooring Board

GenieBoard Protect is an extremely dense and durable, flexible sheet good that is used when localized floating floors with non-stick surface are required.

- **Proven to help significantly reduce ground borne vibration above 16Hz when installed on engineered isolation layers**
- **Allows for extreme heavy impacts with no damage to surface**
- **Flexibility under impact creates locally reactive floating floor**
- **Low coefficient of friction for easy pick up and drop off of heavy objects**

PRODUCT SPECIFICATIONS	
Tensile Strength	10,000 psi
Modulus of Elasticity - 25°C (D638)	4.1 X 10 ⁵ psi
Elongation - 25°C (D638)	75%
Impact Strength - Notched (D256)	1.0 ft.lbs/in. notch
Hardness - Rockwell (D785)	120 R Scale
Flexural Strength - 25°C (D790)	14,000 psi
Compressive Strength - 25°C (D695)	16,000 psi
Shear Strength - 25°C (D732)	8,600 psi
Deformation Under Load D 2,000 PSI AT 50°C (D621)	0.5%
Coefficient of friction dynamic (No Lubricant) 25°C	0.35

CONTACT US

T. 416.449.0049 | **E.** info@pliteq.com
131 Royal Group Crescent, Vaughan, ON, L4H1X9

The information provided is accurate to the best of our knowledge at the time of issue. However, we reserve the right to make changes when necessary without further notification. Suggested application may need to be modified to conform with local building codes and conditions. We cannot accept responsibility for products that are not used, or installed, to our specifications.



www.pliteq.com